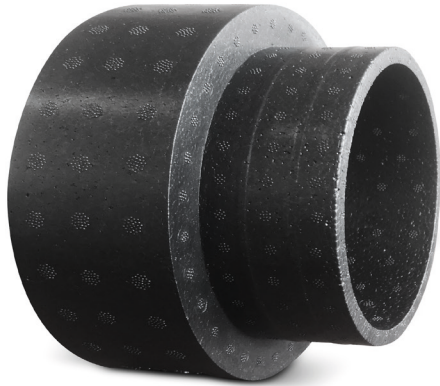


Female coupling made of EPP

# EPP-15-MSF



## Description

A female-male coupling made of expanded polypropylene (EPP) is used to connect the EPP-15 ducts, when the male part is cut off (e.g. when duct is shortened). The female coupling fits the outer diameter of the 15mm duct. The couplings are produced in 125, 160 and 200mm sizes.

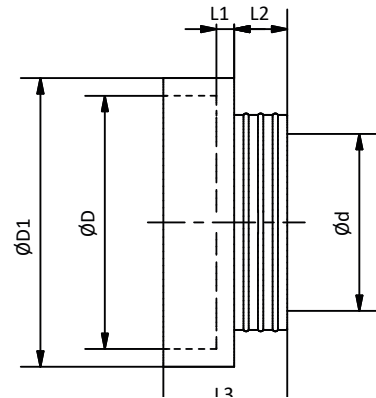
Thermal conductivity: 0.039 W / m\*K  
 Airtightness class: ATC2 (old D) @ 90 Pa  
 acc. to PN-EN 17192:2019-01

**Available materials:**  
 EPP-15-MSF-....- EPP (expanded polypropylene)

**Example of marking:**  
 Product code: EPP-15-MSF - aaa

type \_\_\_\_\_  
 diameter Ød \_\_\_\_\_

## Dimensions



Kod	Ød [mm]	ØD [mm]	L <sub>1</sub> [mm]	L <sub>2</sub> [mm]	L <sub>3</sub> [mm]	ØD <sub>1</sub> [mm]
EPP-15-MSF-125	125	155	10	50	110	179
EPP-15-MSF-160	160	190	10	50	110	214
EPP-15-MSF-200	200	230	10	50	110	254

## Assembly method

